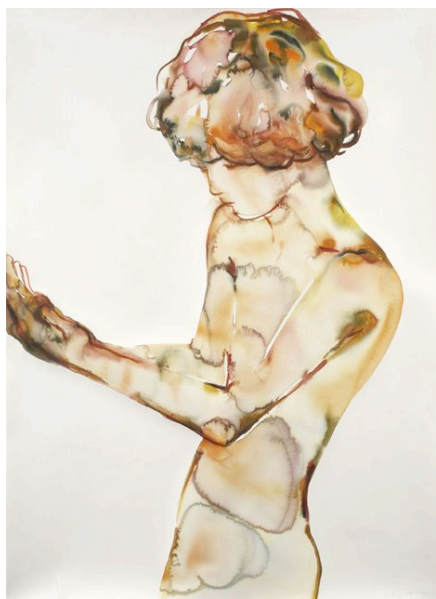


FOR IMMEDIATE RELEASE
For more information please contact
info@kimlightgallery.com

KIM McCARTY *New Work*

March 14 – May 16, 2009
Reception, Saturday, March 14, 6 – 8 pm



Kim Light/LightBox is pleased to present its first solo exhibition by Kim McCarty. Exhibiting in Los Angeles and New York, McCarty is known for her diaphanous watercolor portraits, whose expressionistic exaggerations of the figure have favored a suggestive adolescent androgyny. In this exhibition, two groups of figural works on paper further this project, bringing a maturing anatomical proportion and weight to the artist's alternately expressive and enigmatic subjects.

McCarty's method exploits the nature of watercolor as a liquid medium. Incisive manipulations of a wet-in-wet technique describe the bodies in these paintings with thin, broad washes and short dashes of color; which bleed and blend at their boundaries. The eye is drawn across every inch of the bodies by the transparent washes of pale color that seductively ripple across the flesh. Finer details are concentrated on the features of the face, the hands, and erogenous zones.

Leah Ollman writes: "McCarty uses watercolor's fluidity to portray identities that are themselves fluid." In large works on paper, the near-life-size upper torsos are activated by an air of uncertainty and ambiguity. In each subject there is an unripened arrangement of features that is characteristic of McCarty's aesthetic. Discernible among the figures is a nascent, frustrated grasp at identity, masked by the still-developing command of a body. These figures are sensuous in the serenity of their physical repose, but detached and introspective in their searching glances.

In smaller works on paper, the visual information of the figures is sparser. The stark silhouettes of bodies, the curled contours of leaves, or the petals of a flower constrain and direct the permeable flows of color that otherwise threaten, in their fluidity, to melt into abstraction. Like the distinctive portraits, the renderings of leaves and flowers are somehow alien in their biology, belonging to species of their own. McCarty's paintings of these uncannily described subjects express not only the external life, but the raw core.

Kim McCarty lives and works in Los Angeles, exhibiting in Los Angeles and New York. A graduate of UCLA (MFA) and the Art Center College of Design, Pasadena (BFA), McCarty has shown at Cherry and Martin, Los Angeles; and Briggs Robinson, New York; Dominique Fiat Gallery, Paris; Pasadena Museum of Art, Pasadena; Aldrich Museum of Art, Ridgefield; and her work appeared in the UCLA Hammer Museum's 2003 *International Paper* exhibition. McCarty's work is in the collections of The Museum of Modern Art, UCLA Hammer Museum and the Honolulu Academy of Art.

KIM LIGHT
2656 S. LA CIENEGA BLVD
LOS ANGELES, CA 90034
T 310.559.1111 F 310.559.2911
info@kimlightgallery.com
www.kimlightgallery.com

LIGHTBOX

Pictured: Kim McCarty, *Sept. 15, 2008, 2008* Watercolor on Arches, paper, 60 x 44 inches.